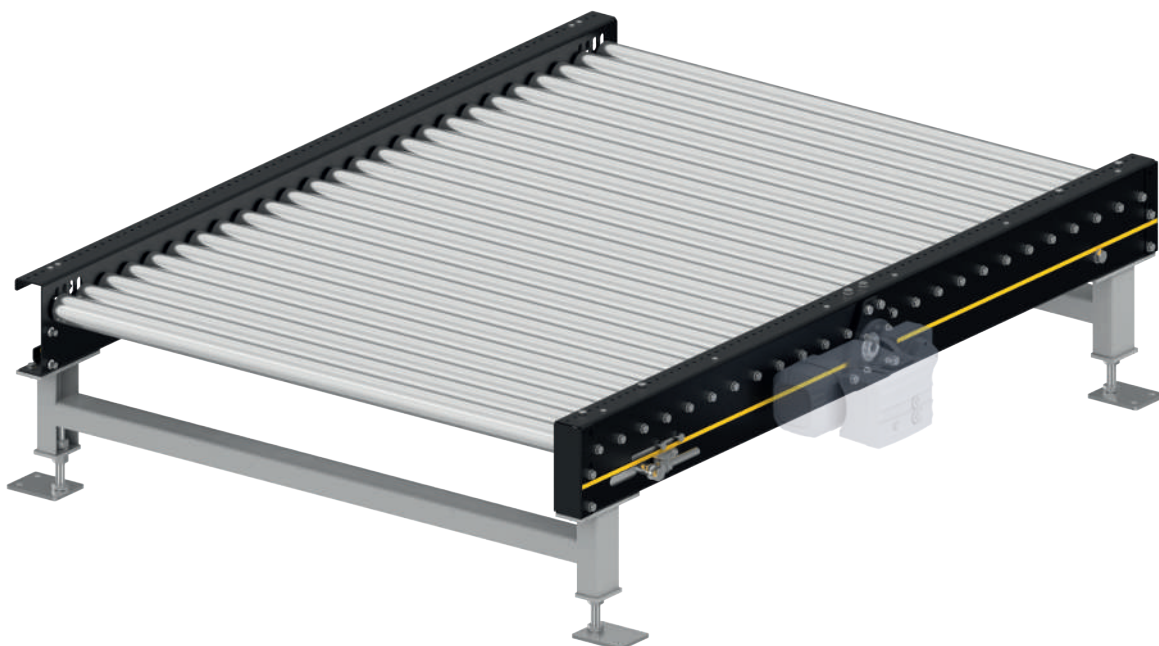


INTERROLL ROLLER CONVEYOR PM 9715



Product description

The roller conveyor is particularly suited for GMA pallets, but also for other pallet types for horizontal transport of full and empty pallets. The rollers can be relocated quickly due to the tangential drive principle and frame design. The chain tensioning station on the outside allows for easy re-tensioning of the precision roller chain. The drive can be installed on the right side or optionally on the left in the direction of travel (DOT). Floor irregularities can easily be compensated with adjustable supports.



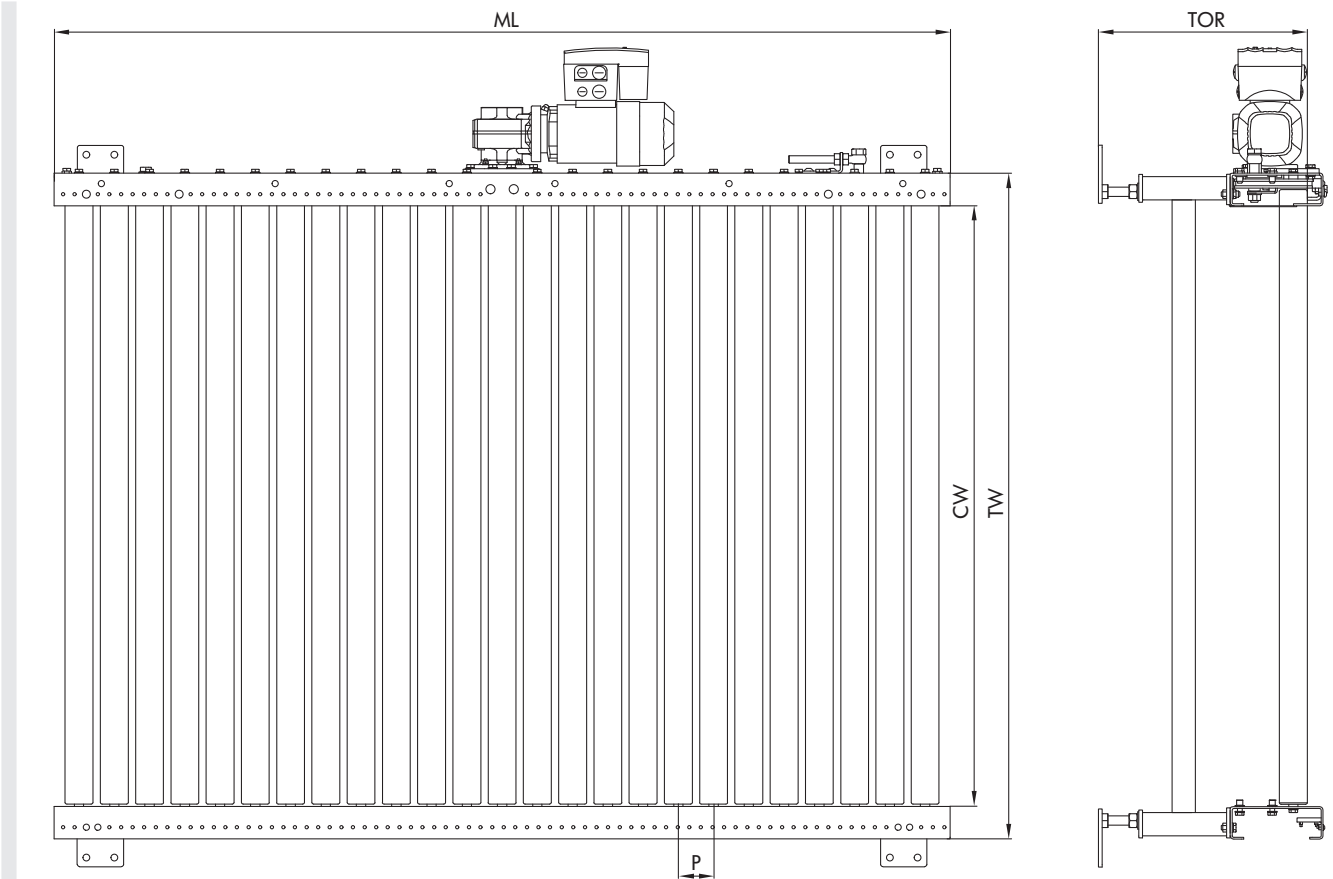
INTERROLL ROLLER CONVEYOR PM 9715

Technical data

General technical data	
Max. load capacity	1000 kg/m
Conveyor speed	0.1 to 0.5 m/s
Ambient temperature	-28 °C to +45 °C (non-condensing) Note: Deep freeze applications are possible only as an option
Incline/decline	Up to max. 4% (for certain motor variants only)
Drive	
Rated voltage	400 V
Motor type	Gear motor
Power	0.12 to 0.75 kW
Roller chain	5/8" x 3/8"
Rollers	
Roller type	Interroll Series 3500
Roller diameter	60 mm
Sprocket	Z13
Material	Steel, zinc-plated
Wall thickness of rollers	3 mm
Profile	
Dimensions	200 x 70 x 4 mm
Color	Powder-coated, all RAL colors are possible
Material	Steel

INTERROLL ROLLER CONVEYOR PM 9715

Dimensions



Conveying good width (CGW)	1216 mm
Module conveying width (CW)	1276 mm
Module width (TW)	1500 mm
Conveying height (TOR)	170 to 1200 mm
Roller pitch (P)	76 mm
Module length (ML)	400 to 5960 mm